

**HPR RANGE** LOAD CENTRES

Cat. No.	Description	No of Poles	Dimensions		
			Height	Width	Depth
HPR15LCMD	Mining Duty Load Centre	15 pole	600	580	225
HPR18LCMD	Mining Duty Load Centre	18 pole	600	580	225

**HCF RANGE** LOAD CENTRES

Cat. No.	Description	No of Poles	Dimensions		
			Height	Width	Depth
HCF6DMD	Mining duty load centre HCF	6 pole	250	260	130
HCF12DMD	Mining duty load centre HCF	12 pole	250	420	130
HCF18DMD	Mining duty load centre HCF	18 pole	250	580	130

**HPR RANGE** MINING DUTY DISTRIBUTION SWITCHBOARDS

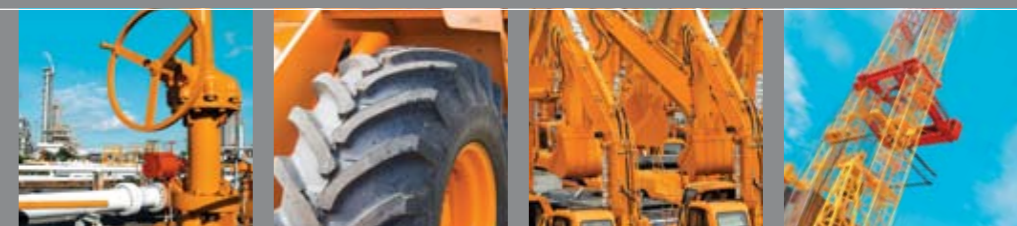
Cat. No.	Dimensions				
	160 Amp Main Switch	250 Amp Main Switch	No of Poles	Height	Width
HPR18M160MD	HPR18M250MD	18	1000	580	225
HPR24M160MD	HPR24M250MD	24	1200	580	225
HPR30M160MD	HPR30M250MD	30	1200	580	225
HPR36M160MD	HPR36M250MD	36	1400	580	225
HPR42M160MD	HPR42M250MD	42	1400	580	225
HPR48M160MD	HPR48M250MD	48	1600	580	225
HPR60M160MD	HPR60M250MD	60	1600	580 <td 225	

**HPS RANGE** MINING DUTY DISTRIBUTION SWITCHBOARDS

Cat. No.	Dimensions				
	160 Amp Main Switch	250 Amp Main Switch	No of Poles	Height	Width
HPS48M160MD7	HPS48M250MD7	48	1400	700	325
HPS60M160MD7	HPS60M250MD7	60	1600	700	325
HPS72M160MD7	HPS72M250MD7	72	1800	700	325
HPS84M160MD7	HPS84M250MD7	84	2000	700	325
HPS48M160MD9	HPS48M250MD9	48	1400	900	325
HPS60M160MD9	HPS60M250MD9	60	1600	900	325
HPS72M160MD9	HPS72M250MD9	72	1800	900	325
HPS84M160MD9	HPS84M250MD9	84	2000	900	325



**MINING DUTY SWITCHBOARDS**



**SALES OFFICES**

**SOUTHERN REGION SALES | VIC & SA**

821 Springvale Road, Mulgrave, Vic 3170  
PO Box 241, Springvale, Vic 3171

PHONE +61 3 9590 3555  
FAX +61 3 9562 0172  
FREE CALL 1800 770 870  
EMAIL sales@heinelec.com.au

**NEWCASTLE**

50 Wyong Road, Lambton, NSW 2299  
PO Box 206, New Lambton, NSW 2305

PHONE +61 2 4952 6653  
FAX +61 2 4952 5020  
FREE CALL 1800 770 870  
EMAIL henev@heinelec.com.au

**PERTH**

40 Belmont Avenue, Rivervale, WA 6103

PHONE +61 8 9478 3341  
FAX +61 8 9478 3501  
FREE CALL 1800 770 870  
EMAIL heper@heinelec.com.au

**DISTRIBUTORS**

**HOBART**

Electrical Agencies  
90 Central Avenue, Moonah, TAS 7009

PHONE +61 3 6273 1855  
FAX +61 3 6273 1158  
EMAIL elecag@bigpond.net.au

**SYDNEY**

15 Mellor Street, West Ryde, NSW 2114  
PO Box 288, West Ryde, NSW 1685

PHONE +61 2 9808 3000  
FAX +61 2 9809 6296  
FREE CALL 1800 770 870  
EMAIL hesyd@heinelec.com.au

**BRISBANE**

Unit 2, 80 Ebberrn Street Darra, QLD 4076  
PO Box 3240, Darra, Qld 4076

PHONE +61 7 3279 1833  
FAX +61 7 3279 1866  
FREE CALL 1800 770 870  
EMAIL hebr@heinelec.com.au

**TOWNSVILLE**

43 Leyland Street, Garbutt, Qld 4814  
PO Box 7491, Garbutt, Qld 4814

PHONE +61 7 4775 5300  
FAX +61 7 4725 1029  
FREE CALL 1800 770 870  
EMAIL hetow@heinelec.com.au

**DARWIN**

Jewell Distributors Pty.Ltd.  
Cnr.Hidden Valley & Beaton Roads,  
Berrimah, NT 0828

PHONE +61 8 8947 0870  
FAX +61 8 8947 0764  
EMAIL jewell.distributors@bigpond.com

**MELBOURNE HEAD OFFICE & MANUFACTURING PLANT**

ADDRESS 821 Springvale Road, Mulgrave, Vic 3170 | PO Box 241, Springvale, Vic 3171  
PHONE +61 3 9590 3500 | FAX +61 3 9562 0172 | EMAIL heinelec@heinelec.com.au



A member of the **CB** electric Group



**HEINEMANN ELECTRIC PTY LTD** » FREE CALL 1800 770 870 » www.heinemannelectric.com.au

**HEINEMANN ELECTRIC PTY LTD**

A member of the **CB** electric Group

# » HEAVY DUTY SWITCHBOARDS

Heinelec type HPR & HPS Mining Duty Switchboards and HCF Mining Duty Load centres are designed and built to meet the needs of Australia's harsh mining requirements. The clean and structured appearance in combination with a robust steel cabinet construction and positive door sealing, guarantees electrical equipment is fully protected from the elements. Built to last our Mining Duty Switchboards meet ever increasing safety requirements demanded by our Mining related customers.

**STANDARD FEATURES »** All Heinelec Mining Duty Load Centres & Switchboards offer the following features as standard:

- » Integral padlocking provision on main switch, circuit breakers and residual current devices.
- » Baked polyester powder coated finish (X15 Orange to AS2700) in 75 microns (HCF) and 120 microns (HPR & HPS).
- » Phase coloured I.P.A studs fitted to the escutcheon.
- » Dummy circuit breakers as pole fillers.
- » IP2X protection on all line and load terminals.
- » All external and internal labels secured with stainless steel screws.



HPR & HPS Mining Duty Switchboards

HCF Mining Duty Load Centre

Circuit breakers with Padlock Attachments

## » HEINEMANN ELECTRIC & MINING

Continued development combined with tried and tested products, have produced Mining Duty Switchboards which perform consistently in the toughest of environments.

[www.heinemannelectric.com.au](http://www.heinemannelectric.com.au)

### HPR & HPS MINING DUTY SWITCHBOARDS

Enclosure dimensions of 225mm D x 580mm W (HPR) and 325mm D x 700mm W or 900mm W (HPS) offer increased gland plate area for the termination of cables and increased internal area for cable routing. A double return enclosure sealing flange provides positive deflection from the ingress of foreign material and liquids entering the enclosure; while a high quality door sealing gasket with high UV withstand provides sealing and stability over a wide temperature range.

The HPR and HPS switchboards offer IP56 (with vented rain hood) and IP66 degree of protection and have proven over the years to offer enhanced protection for harsh environments due to their inherent robust construction.

### PADLOCK ATTACHMENTS

All Heinelec switch disconnectors, MCBs and RCBOs used have an integral padlock attachment fitted. These attachments provide positive lock out for isolation procedures and accept padlocking scissors and padlocks with up to 8mm hasps.

### HCF MINING DUTY LOAD CENTRES

The HCF load centre offers end users the flexibility to install a load centre with mining duty features in areas that do not exceed an IP40 degree of protection.

The padlockable lift up door offers extra depth to allow padlocking attachments and padlocks to be installed. Enclosure dimensions: 130mm(D) x 250mm(H). The HCF load centre is available in 6 (260mm W), x 12 (420mm W) and 18 pole (580mm W) capacities.

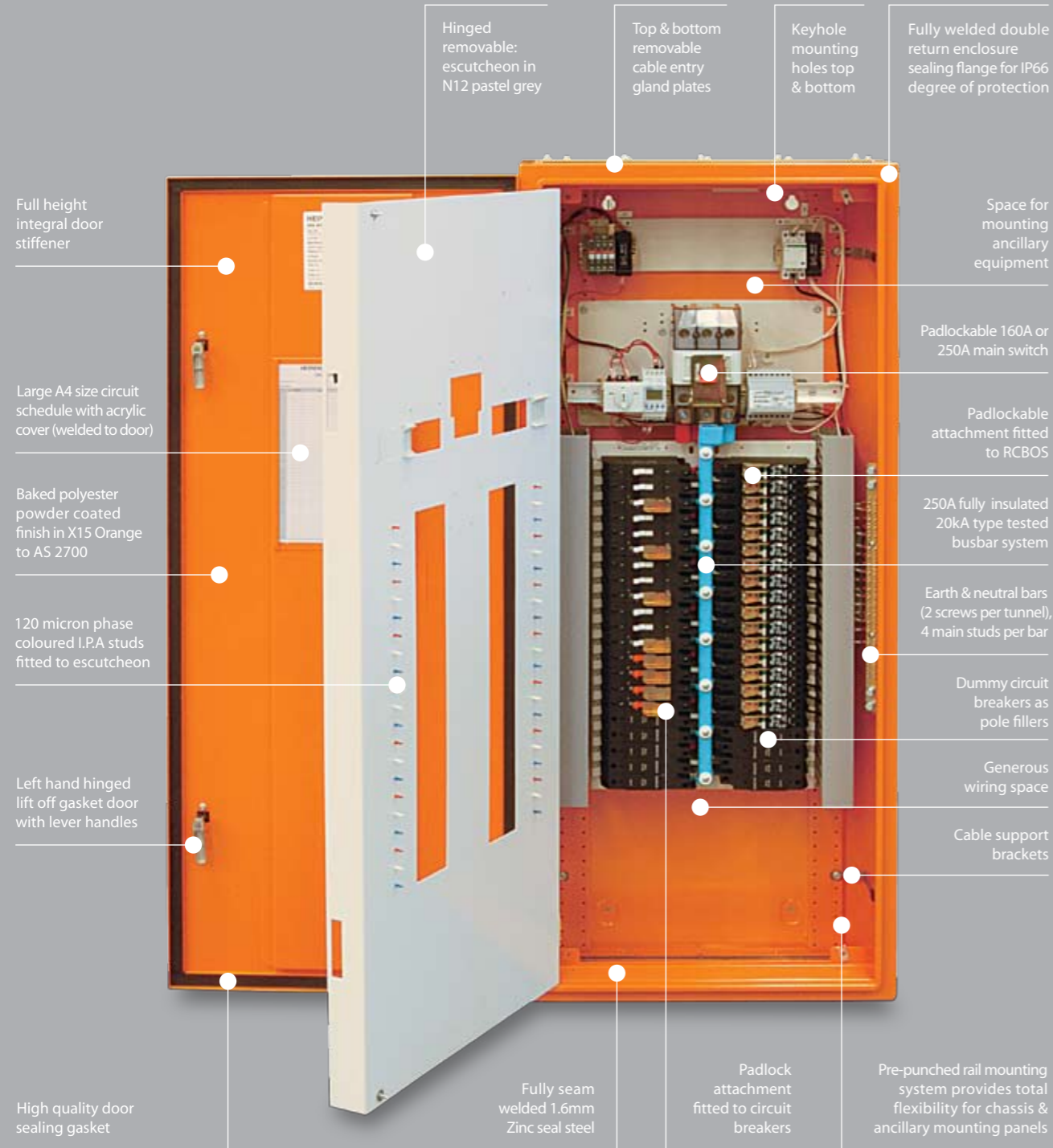
### RAIN HOODS

These are optional on the HPR and HPS and provide positive enclosure protection from rain and moisture. An IP56 rating is achieved when using a vented rain hood while an IP66 rating is maintained with a non-vented rain hood.

All vented rain hoods contain a non-hydroscopic membrane filter mesh material which allows the enclosure to 'breathe' (IP 56 enclosure) as well as preventing condensation forming and falling onto equipment. The additional lip over the door flange prevents the build up of dirt and dust falling when the door is opened.

# » FEATURES AT A GLANCE

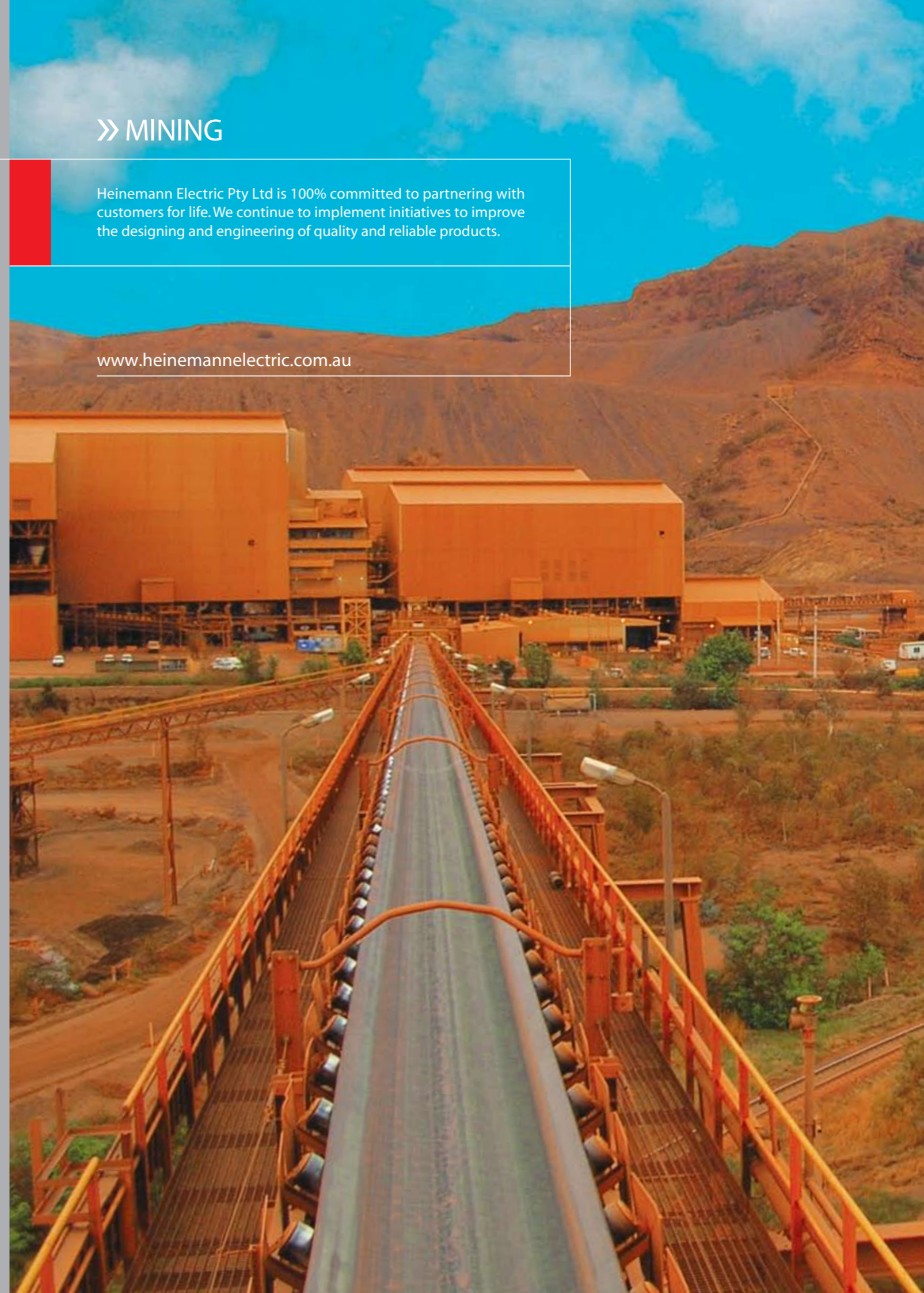
The generous space within the HPR mining duty switchboard, coupled with ergonomic design and removable sections allow for easy access for equipment fitting and wiring.



## » MINING

Heinemann Electric Pty Ltd is 100% committed to partnering with customers for life. We continue to implement initiatives to improve the designing and engineering of quality and reliable products.

[www.heinemannelectric.com.au](http://www.heinemannelectric.com.au)

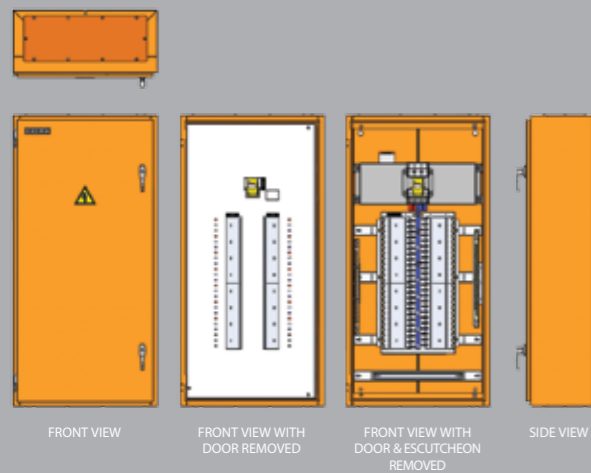


## »» OPTIONS

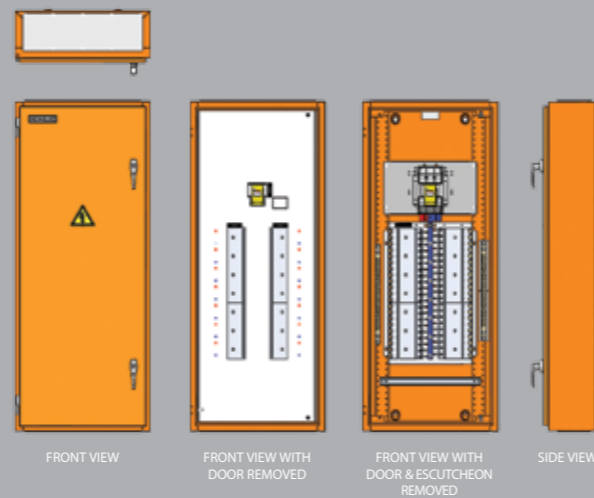
- »» Weatherproof rain hoods
- »» External mounting brackets (welded or bolted on)
- »» Hot dip Galvanised plinth Kits
- »» Gland plates available in Aluminium or brass
- »» Special paint colours upon request
- »» Aluminium & Stainless Steel enclosures.
- »» Spilt busbars
- »» Main switch fitted at bottom.

## »» SWITCHBOARD LAYOUTS

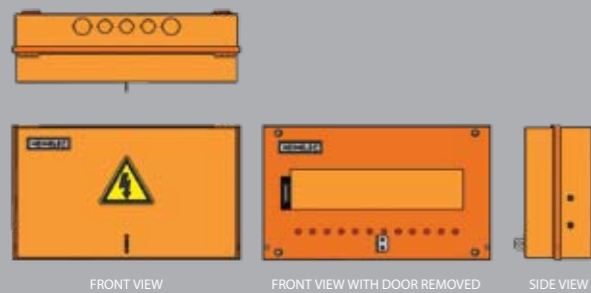
### »» HPS MINING DUTY SWITCHBOARD LAYOUT



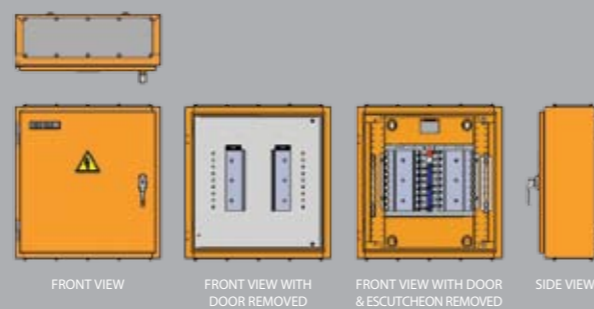
### »» HPR MINING DUTY SWITCHBOARD LAYOUT



### »» HCF MINING DUTY LOAD CENTRE LAYOUT



### »» HPR MINING DUTY LOAD CENTRE LAYOUT

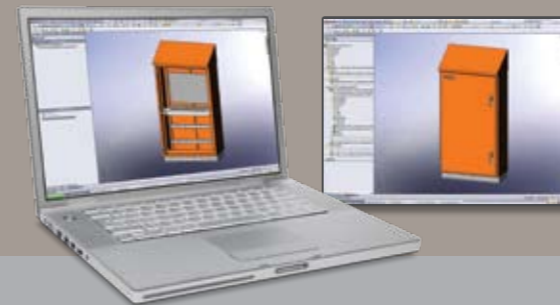


## »» DESIGN & ENGINEERING

Heinemann Electric's Engineering & Design Services is your trusted source for technical & product solutions. We continue to implement design and engineering initiatives for improvement of our products.



SolidWorks 3D design engineering software allows for fast & efficient design solutions.



## »» ASSEMBLY

Fast efficient assembly of all Heinemann Electric Switchboards, allows for unmatched serviceability to all customers requirements.



## »» MANUFACTURING

Heinemann Electric's own integrated manufacturing plant, ensures fast response for customised variations whilst still manufacturing to stringent quality assurance procedures.