

# Anchor Plugs »

The Slegers anchor plug is an economical light duty anchor made from unbreakable nylon. It is ideal for low cost installation into plasterboard, chipboard, or any hollow wall application where a light load is being applied.

## Features



- » Economical light duty anchor
- » Quick and easy installation
- » Non corrosive
- » Supports load evenly on all plug fins
- » Plug is self aligned in hole
- » Internal fins grip hole to stop anchor turning when tightening
- » Australian made

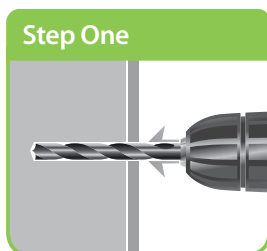
## Applications

- » Electrical fixtures
- » Tool racks
- » Lightweight cupboards
- » Shelving
- » Communication systems

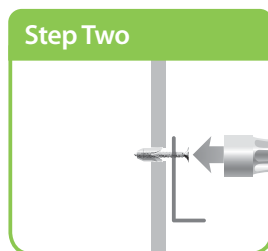
## Selection Data

Cat. No.	Screw Size	Hole Dia	Anchor Colour	Pack Qty
SA47D	7 gauge	8mm	Red	100
SA48D	8 gauge	8mm	Green	100
SA47J	7 gauge	8mm	Red	300

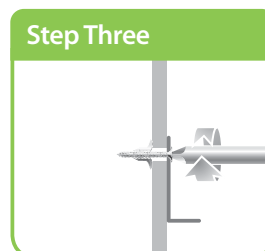
## Installation



Drill hole using the specified diameter bit noted in table.



Pass the recommended size screw through the fixture being fastened, then screw into anchor plug and push through hole.



Maintaining pull back pressure on the fixture screw the fixing into place.